

## 2-2 Transformations

### Objectives:

**2-2a:** I can identify transformations from an equation and from a graph.

**2-2b:** I can identify attributes of transformed functions.

May 27-8:44 AM

$$y = a(x-h)+k$$

Domain changes

Range changes

	Vertical (Range)	Horizontal (Domain)
Shift		
Stretch/Compress		-----
Reflection		-----

Aug 11-8:51 AM

Information to remember about transformations....

# x's lie

any change to the domain (x's) is opposite of what appears in the equation

Aug 11-8:52 AM

State the parent function and the transformations.

$$f(x) = \sqrt{x} - 2$$

$$f(x) = (x + 3)^3$$

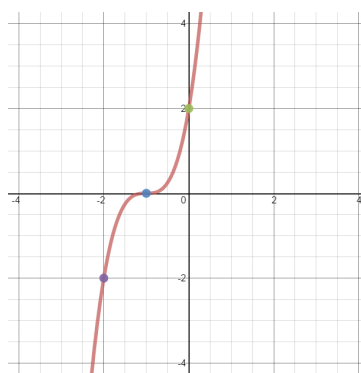
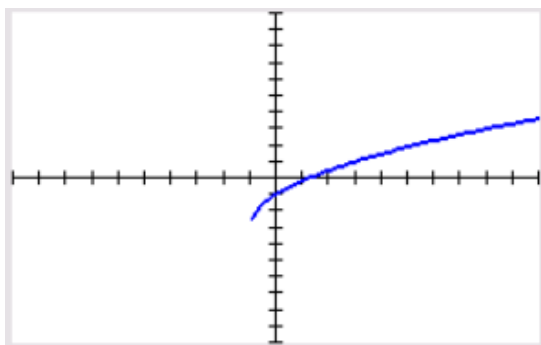
$$f(x) = 2|x|$$

$$f(x) = -2^x + 5$$

$$f(x) = 2(x + 1)^2 - 3$$

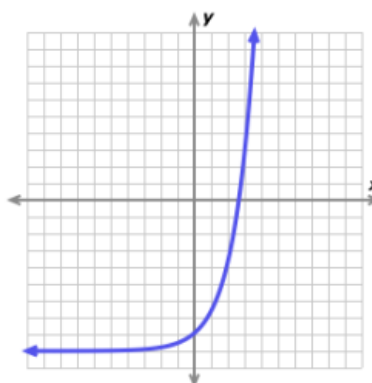
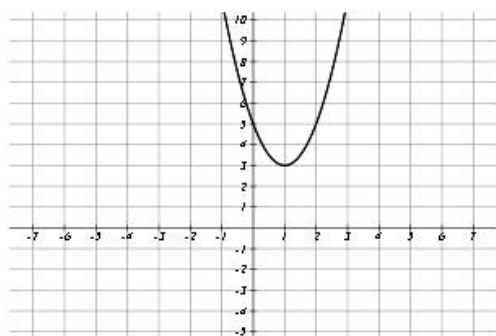
Aug 11-8:53 AM

State the parent function and the transformations.



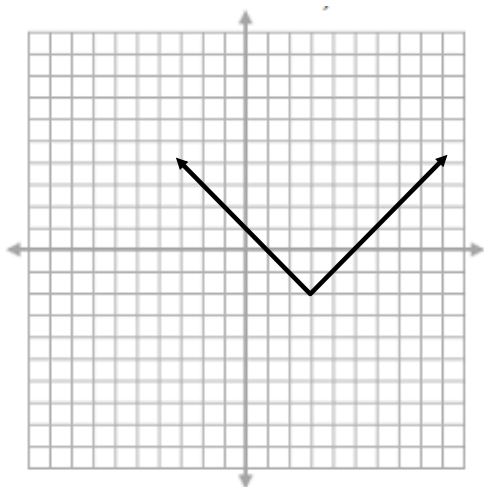
Jul 27-8:49 AM

State the parent function and identify the transformations and graph



Aug 14-4:18 PM

State the parent function, transformations, and attributes of the graph.



Parent Function:

Transformations:

Domain:

Range:

Increasing:

Decreasing:

Left End Behavior:

Right End Behavior:

x-intercepts:

y-intercepts:

Sep 19-7:28 AM